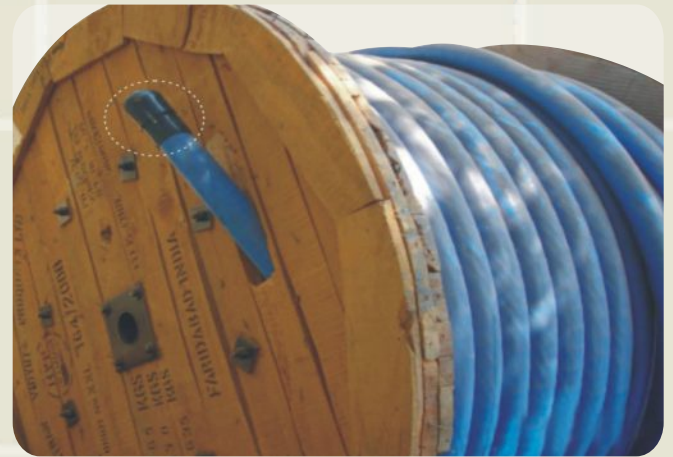
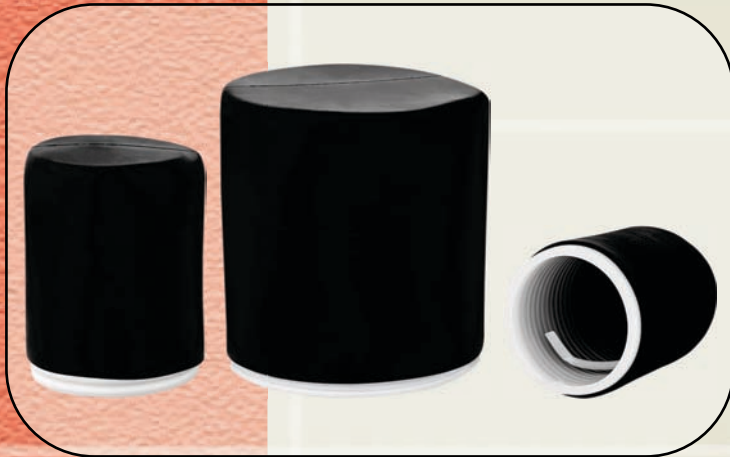


COLD SHRINK END CAP



Cold Shrink End Cap is used to seal the ends of all types of Cables & protect from ingress of water / moisture. The caps are manufactured from high quality EPDM Rubber compatible with most commonly used Cable Jackets i.e. XLPE, PVC, PILC or Rubber Sheathed Cable.

Gala Cold Shrink End Cap are close ended, tubular rubber end cap that are factory expanded and loaded onto a removable core. When positioned over the end of a cable or other cylindrical object, the core is removed to provide a reliable environmental seal. Different end caps are available to accommodate a wide range of sizes.

Features :

- Simple and fast installation, no tools required.
- Accommodates size ranges from 10mm - 80mm.
- Seals tight, retains resiliency for years.
- Good abrasion resistance.
- Water resistance.
- No mastic or tape required.
- Resists acids and alkalis.
- Resists ozone.
- No training required for installation.
- Resists fungus.

Selection Chart

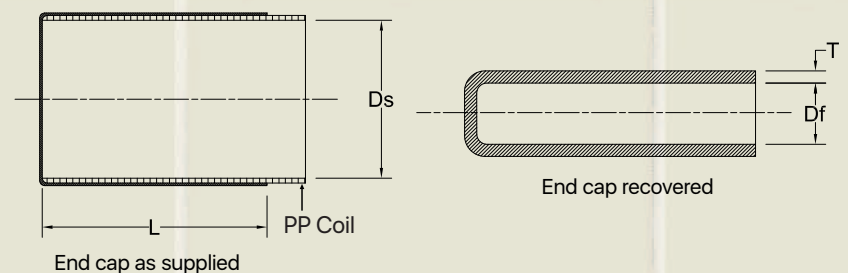
All dimensions are in mm

Code No.	Ds (min.)	Df (max.)	Lf (min.)	Tf (min.)	Application Range
GCEC - 01	25	12	60	3.3	13 - 20
GCEC - 02	35	16	75	3.4	17 - 30
GCEC - 03	45	22	80	3.4	23 - 38
GCEC - 04	55	22	80	3.4	23 - 48
GCEC - 05	90	45	100	3.4	46 - 80

Technical Specification

Properties	Test Methods	Typical Value
Colour	Visual	Black
300% Modulus	ASTM D-412	3.3 MPa
Ultimate Tensile	ASTM D-412	9.6 MPa
Ultimate Elongation	ASTM D-412	750%
Die C Tear	ASTM D-624C	26.3 KN/m
Fungus Resistance	ASTM G-21	28 Days exposure no growth
Moisture Absorption 7 days @ 90°C H2O	Internal Method	Wt. Gain 1.8%

D : Diameter | s : as supplied | f : after free recovery



An ISO 9001, ISO 14001 & ISO 45001:2018 Certified Company

GALA THERMO SHRINK PVT. LTD.

M : 88791 22705 | E: info@galathermo.com | W: www.galathermo.com